



Parts and Labor

new works by:

AJ Fosik • Monster Project • kgbe RotGut

November, 2004 A.D.

Parts and Labor

new works by:

AJ Fosik • Monster Project • kgbe RotGut

November, 2004 A.D

ANNO DOMINI[™]
the second coming of Art & Design

Artworks subject to availability.
Please contact us for more information:
rEvolution@galleryAD.com or 408-271-5151

Catalogue ©2004, Two Fish Design.
All original artworks are © of the respective artist.





1. Hard Done By 29"x23" - \$450



AJ Fosik is originally from Detroit, now hailing from Brooklyn. He combines images and iconography carefully collected and scavenged from past traditions both real and fabricated which are interpreted and woven together to create a trenchant body of work that is equal parts signage, folly and hard luck story.





16. Untitled 36"x28"- \$700



14. Untitled 11"x9"- \$200



5. Untitled 6.5"x17"- \$350



Above: 11. **Untitled** 9"x12" - \$150
Right: 15. **Untitled** 15"x12" - \$250





7. Untitled 14"x11"- \$150



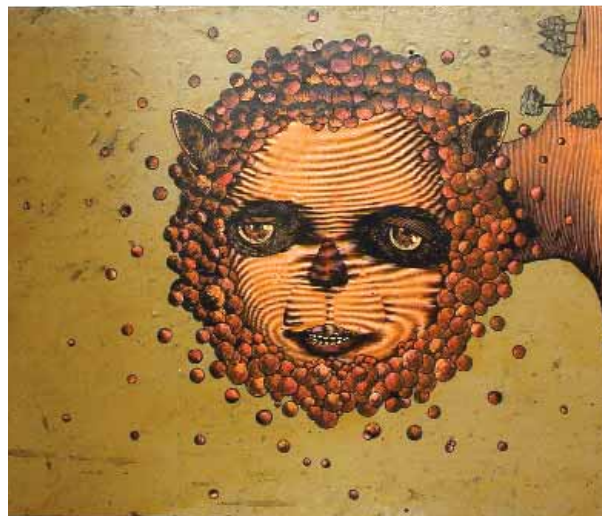
1. Hard Done By 32"x7" - \$450



10. Bear Heart 17"x14"- \$275



19. Hard Done By 18.5"x23"- SOLD



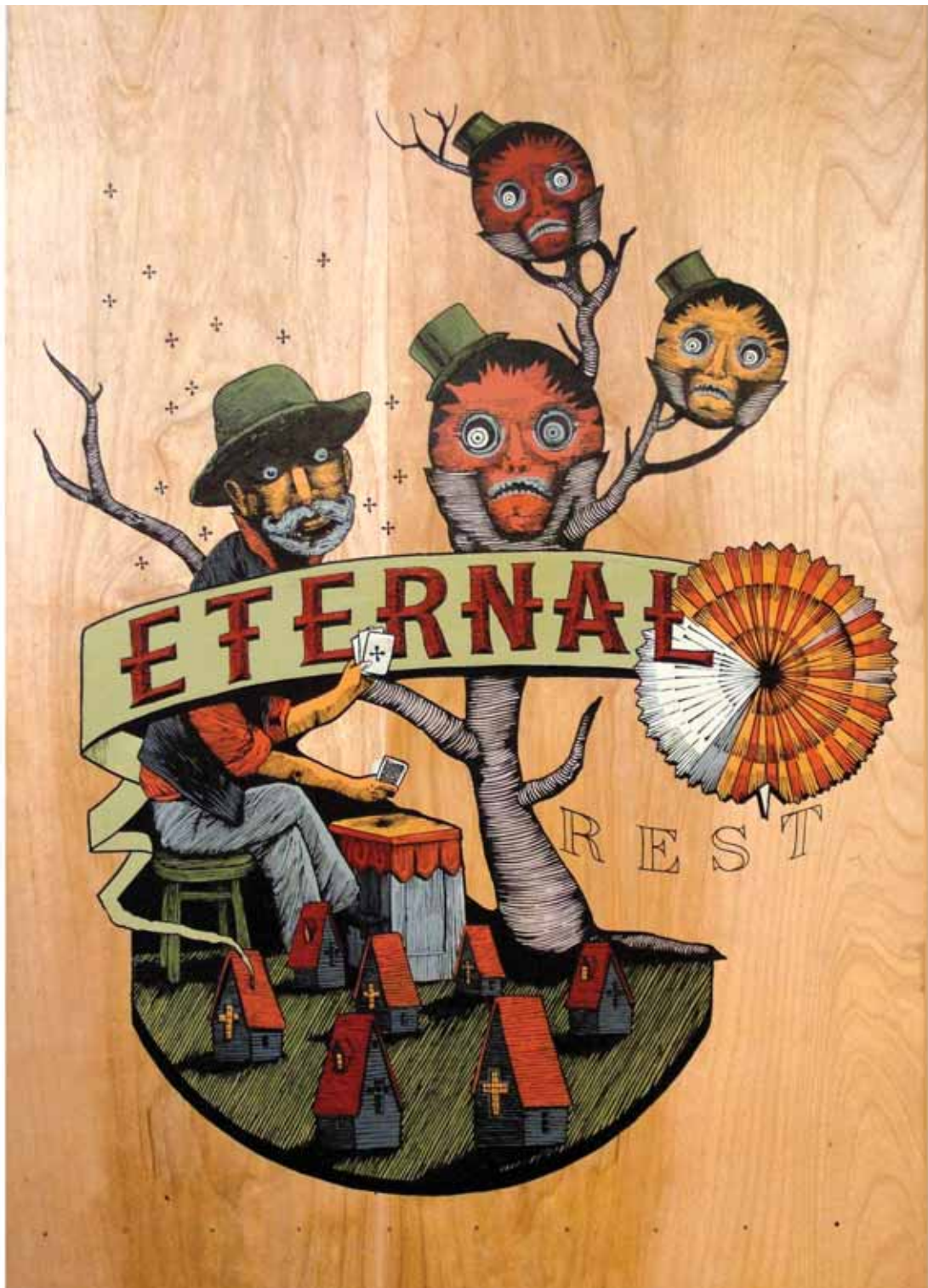
9. Gordy's 5.5"x7.5" \$50



18. Untitled 15"x11"- \$175



Left: 12. **Bound 2 Dust** 26.5"x21.5"- \$600
Above: 17. **Untitled** 15"x18"- SOLD



Left: 2. **Eternal Rest** 32"x21"- \$600
Above: 6. **Yer Boy** 24"x19"- \$550



Monster Project looks to give a face to the cannibalism of urban life, a face to that which is always eating itself, a face to that which is our Cities. Monster Project seeks to highlight the unnoticed, to find the forgotten. Monster Project is about pointing out what is already here around us with the hope that it may encourage the act of looking around. Monster Project looks to inspire the act of taking a moment to stop and to see again. Monster Project is about noticing the beauty that naturally happens in these places we call City.



Over the past four years, the Monster Project team has created site-specific installations focusing on forgotten corners. Often requiring extensive planning and late night execution, each piece becomes a story, each installation and adventure. No two are exactly the same, as no two locations are ever identical. Conceived in Providence, Rhode Island in November of 2000, Monsters have feasted on Providence, Boston, New York and Rome, Italy.









4. Providence, RI 19"x15"- \$200





Monster Project 2004

Documenting installations from January through September of 2004, this new book is 24 pages long, black and white interiors with a two-tone cover. Printed professionally on newsprint, each page measures 10.75" wide by 17" high. Focusing on installations from New York and Boston, this tabloid celebrates the fourth year of the team's activity. \$2/ea.



kgbe Rotgut has become a prominent figure in the illegal street art movement in NY over the past couple of years. Much like his work on the street, the pieces in this show are inspired by and use materials found in the blighted urban areas of North American cities. His newest series of paintings and sculptures blend the convoluted complexity of 19th century maps of America with the raw beauty of rusted metal and chipped paint. Obscure vestiges of our nation's sordid past are constructed in new ways to form a unique visual experience.





19. Blockade 12"x18"- \$250



15. Railroad 12"x15"- \$200





25. Mexican Flag 15"x10.5"- \$150



15. RPCL (California) 12"x18"- \$200



22. Map 6.5"x9.5"- SOLD

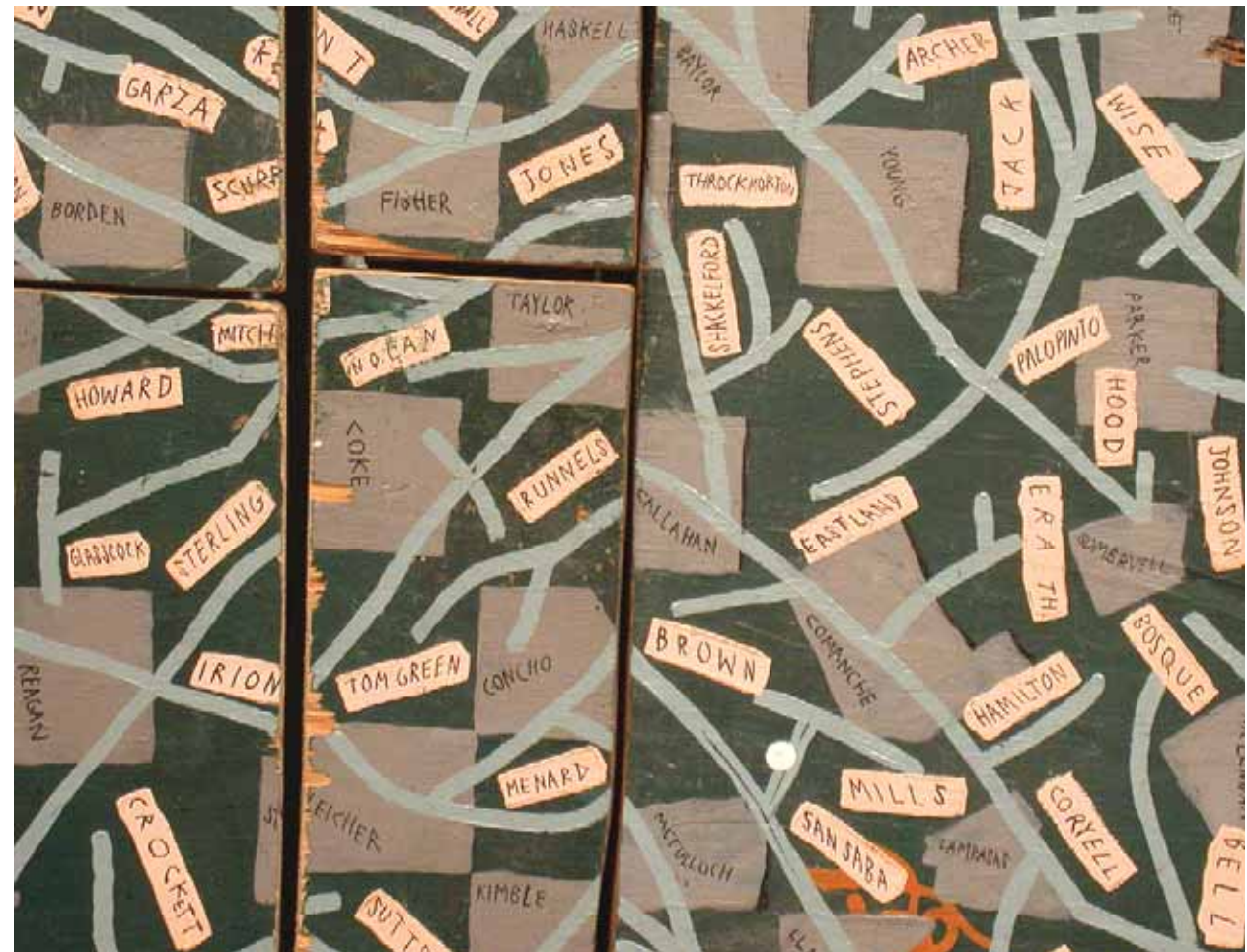


34. Aquisitions 16"x20"- \$300

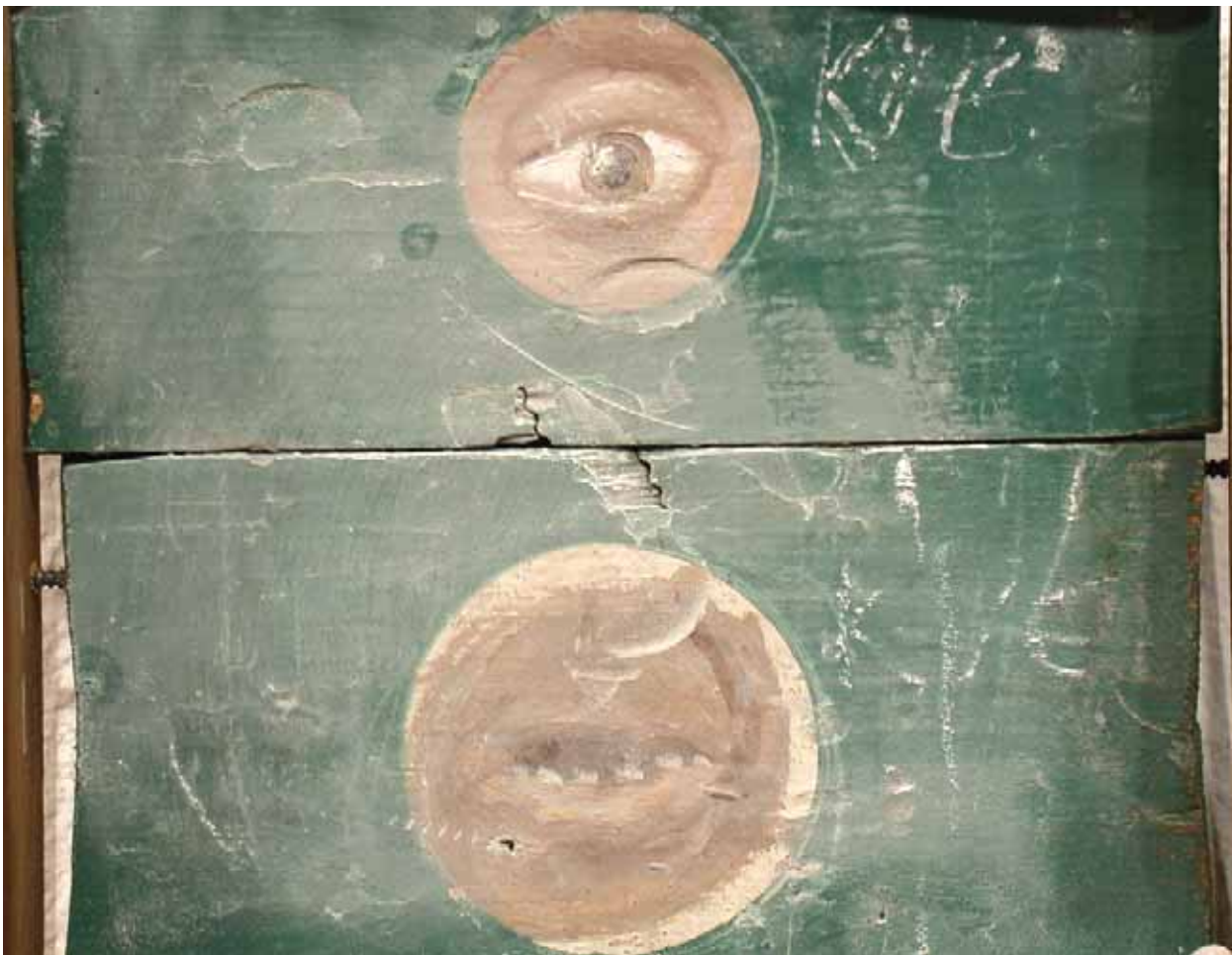


33 River Map 15"x17"- SOLD





35. Texas 38"x32" - \$300



36. Chalkface 9.5"x8.5"- \$150



46. Longshoreman 14.5"x14.5"- \$100





29. Railroad Map 32"x17"- \$400



ANNO DOMINI™

the second coming of Art & Design

150 South Montgomery St. Unit B
San Jose, CA 95110
408-271-5151 www.galleryAD.com